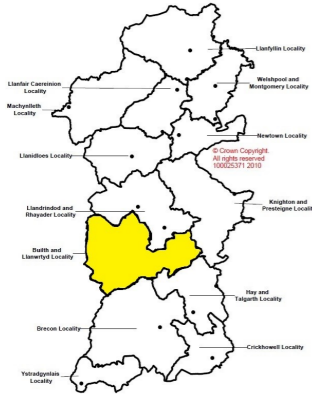


Review of Older People day time activities, Business Intelligence Insight: **Builth and Llanwrtyd**

The Community



- The current population is 6,884 ^{*1} The average age of people in the locality is 45 years (Powys average 45). Females make up 51% of the population of the area, and males 49%



- 25% of the population are over 65 (Powys average is 25.3%), whilst people over 85 make up 3.3% of the population (Powys average is 3.4%). Overall the population is expected to increase by 1.4% by 2036 (from 6,988 in 2013 to 7,085; Powys average is 1.4% increase)^{*2}. In contrast, the over 85 population is expected to rise more steeply, with the population moving by 165% from 228 to 605 over the same period.

- Based on Dementia prevalence trends for Powys^{*3} and population distributions, it is estimated that there are around 124 people with dementia in this locality and that this will rise to 144 and then 228 by 2020 and 2035 respectively

- 9.5% (342 people) of working population employed in Care/Leisure industry—lower than Powys average 10.1% (500 per locality)^{*4}

- Higher than average travel time to an NHS Dentist (58 minutes, Powys Average 55 minutes) and GP surgery (56 minutes, Powys Average 50 minutes)^{*5}

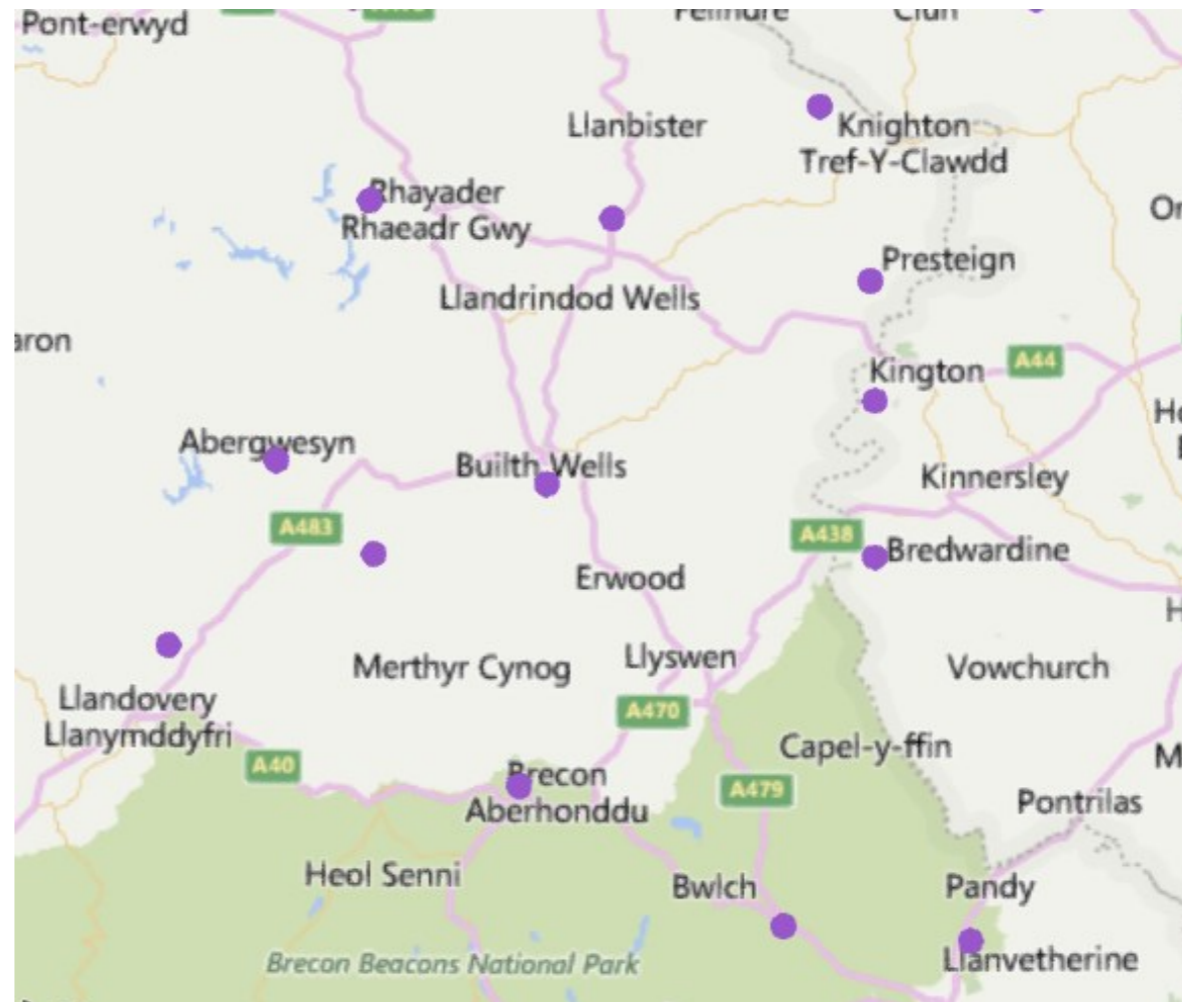
- 24% of residents feel satisfied with **care for older people/the elderly** this locality (average for all Powys Localities = 28%)^{*6}

- 86% of residents feel satisfied that this locality is a place where people **look out for and support each other** (average for all Powys Localities = 81%)^{*6}



- 92% of residents in this locality say that they or a family member participate (either regularly or sometimes) in **local community events and activities** (average for all Powys Localities = 84%)^{*6}

There is currently no Day Centre Provision in this Locality

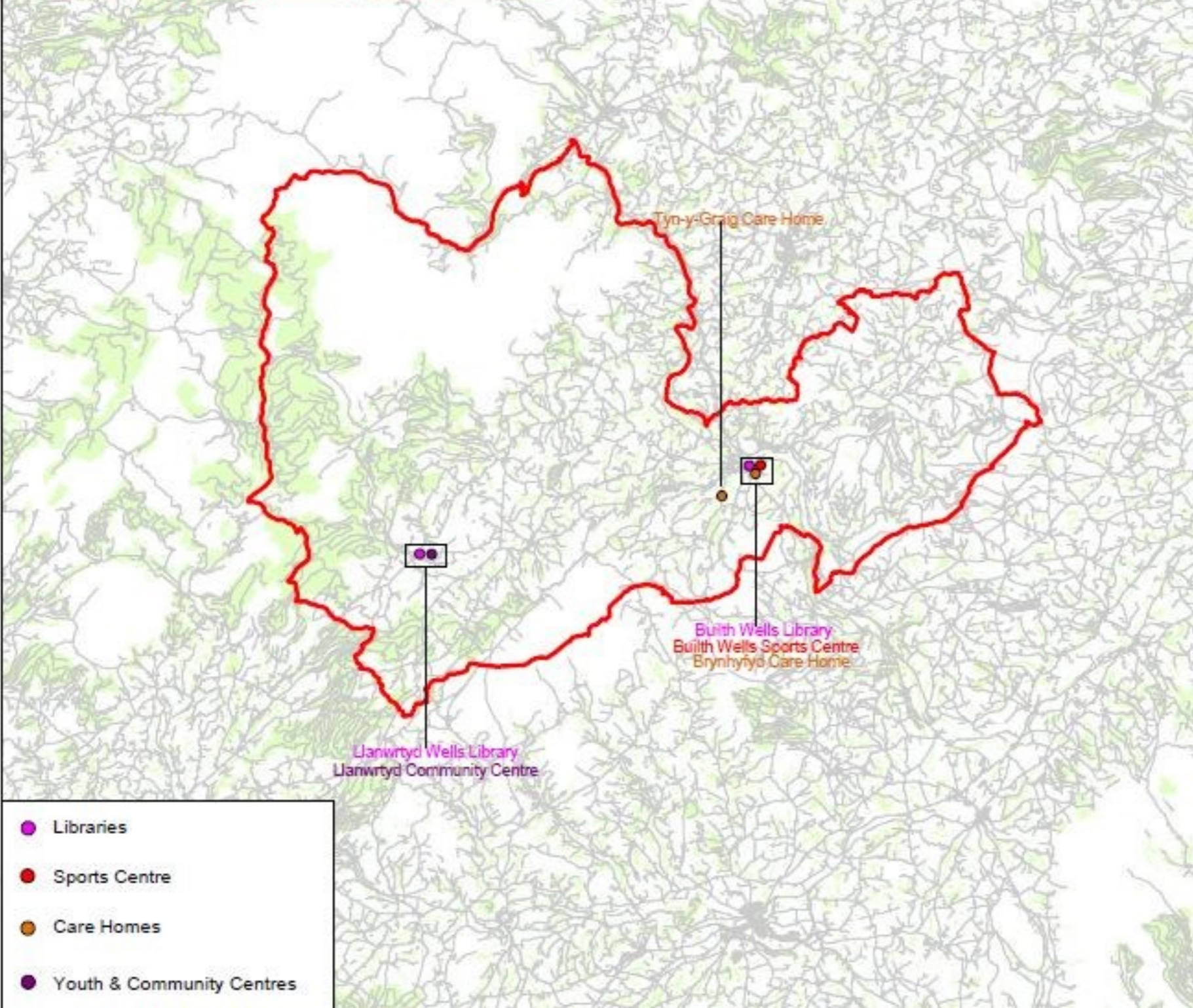


Map of Preventative Services for Adults and Older People

References

- | | |
|---|---|
| 1. 2014 Mid Year Population Estimates, ONS | 5. Welsh Index of Multiple Deprivation, 2011. PCC Research & information Unit Report RWIMD11/0212 |
| 2. 2011 based population projections for Local Authorities in Wales, Welsh Government, 2013 | 6 Powys County Council Residents Satisfaction Survey, 2015 |
| 3. www.daffodilcymru.org.uk | |
| 4. Annual Survey of Hours and Earnings (ASHE), ONS, 2011 | |

© Crown copyright and database rights 2016 Ordnance Survey 100025071
 © Hafbank y Gaeon a hawliau corff o data 2016 Arolwg, Orderns 100025071
 Additional information © Powys County Council 2016 No additional copies should be made without the permission of the Council.
 Gwybodaeth ychwanegol © Cyngor Sir Powys 2016 Ni ddylid gystud unrhyw gopïau ychwanegol heb ganiatâd y Cyngor.



- Libraries
- Sports Centre
- Care Homes
- Youth & Community Centres

